

# **2012 Annual Report**



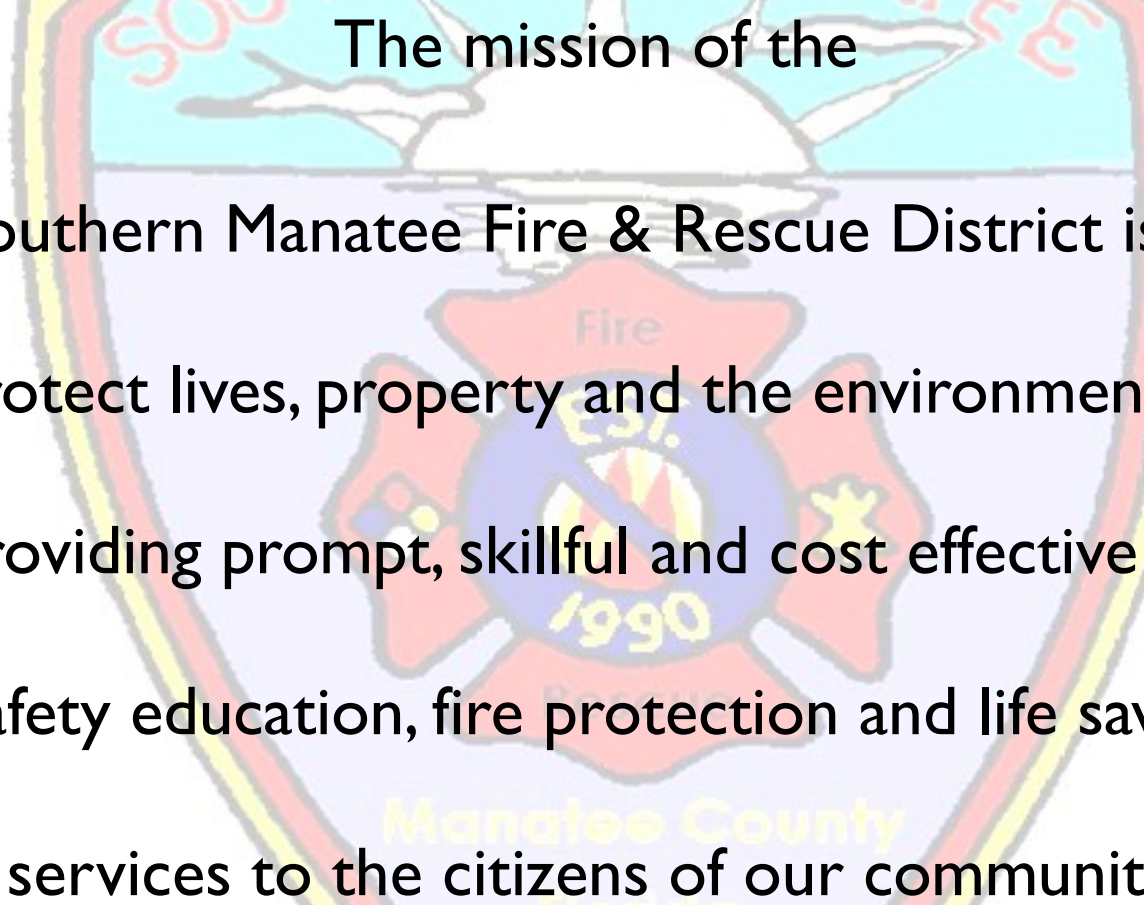
**SOUTHERN MANATEE  
FIRE & RESCUE DISTRICT**

# **SOUTHERN MANATEE FIRE & RESCUE DISTRICT 2012 ANNUAL REPORT**



**SOUTHERN MANATEE FIRE & RESCUE DISTRICT****2012 ANNUAL REPORT****TABLE OF CONTENTS**

<b>Mission Statement.....</b>	<b>3</b>
<b>Administrative Division.....</b>	<b>4</b>
Overview	
District Map	
Budget Analysis	
<b>Operations Division.....</b>	<b>9</b>
Staff	
Operations Report	
Response Activities	
<b>Fire Prevention Division.....</b>	<b>19</b>
Staff	
Programs/Activities	
<b>Juvenile Fire-Setters Program.....</b>	<b>24</b>
<b>Training.....</b>	<b>26</b>
<b>Volunteers.....</b>	<b>29</b>

**SOUTHERN MANATEE FIRE & RESCUE DISTRICT****OUR MISSION**The logo is a shield-shaped emblem. The top half has a light blue background with the words "SOUTHERN MANATEE" in red, arched lettering. Below this is a white silhouette of a manatee swimming. The bottom half has a light purple background. In the center is a red Maltese cross. Inside the cross, the word "Fire" is at the top, "Est." is in the middle, and "1990" is at the bottom. To the left of the cross is a fire hydrant, and to the right is a fire truck. At the bottom of the shield, the words "Manatee County" and "Florida" are written in yellow.

The mission of the Southern Manatee Fire & Rescue District is to protect lives, property and the environment by providing prompt, skillful and cost effective fire safety education, fire protection and life saving services to the citizens of our community.

# **SOUTHERN MANATEE FIRE & RESCUE DISTRICT**

## **ADMINISTRATIVE DIVISION**

### **OVERVIEW**

The Southern Manatee Fire & Rescue District was formed June 1, 1990, with the merger of the Oneco-Tallevast Fire Control District and the Samoset Fire Control District. The combination department provides fire protection to a population of approximately 55,000 permanent residents and grows to 65,000 winter residents in a 34 square mile area. Generally, the District includes the areas south of the City of Bradenton, east of First Street, west of the Braden River and north of University Parkway, the Sarasota County line. Major transportation routes within and adjacent to the District include U.S. 41, U.S. 301, State Road 70, University Pkwy and I-75.

In addition, the District is served by two railroad lines, Seminole Gulf Railroad and Seaboard Coast Line. The southwestern portion of the District borders on the Sarasota-Bradenton International Airport. The Southern Manatee Fire & Rescue District protects the largest industrial area in Manatee County. The total value of commercial and residential properties protected is \$4,246,118,454.

The Southern Manatee Fire Rescue District operates five (5) fire stations that are staffed 24 hours a day, a training facility, and an administrative office that also houses our Fire Prevention Bureau. The District employs 82 full time employees and six part time employees.

- |                                 |                                   |
|---------------------------------|-----------------------------------|
| • Administration                | 2451 Trailmate Drive              |
| • Station 1                     | 6100 15 <sup>th</sup> Street East |
| • Station 2                     | 1911 30 <sup>th</sup> Avenue East |
| • Station 3                     | 7611 Prospect Road                |
| • Station 4                     | 5228 45 <sup>th</sup> Street East |
| • Station 5                     | 7301 Honore Avenue                |
| • Training Facility             | 7611 Prospect Road                |
| • Building Maintenance Facility | 1911 30 <sup>th</sup> Avenue East |



In addition, we have an extensive mutual aid response system with all neighboring fire departments and agencies, including all Manatee County Fire Districts, City of Bradenton Fire Department, and Sarasota County Fire Department.

Southern Manatee Fire & Rescue District holds a Class **3** rating from the Insurance Services Office (ISO). The lower the rating the greater the possibility that property owners could see a reduction in their insurance premiums.

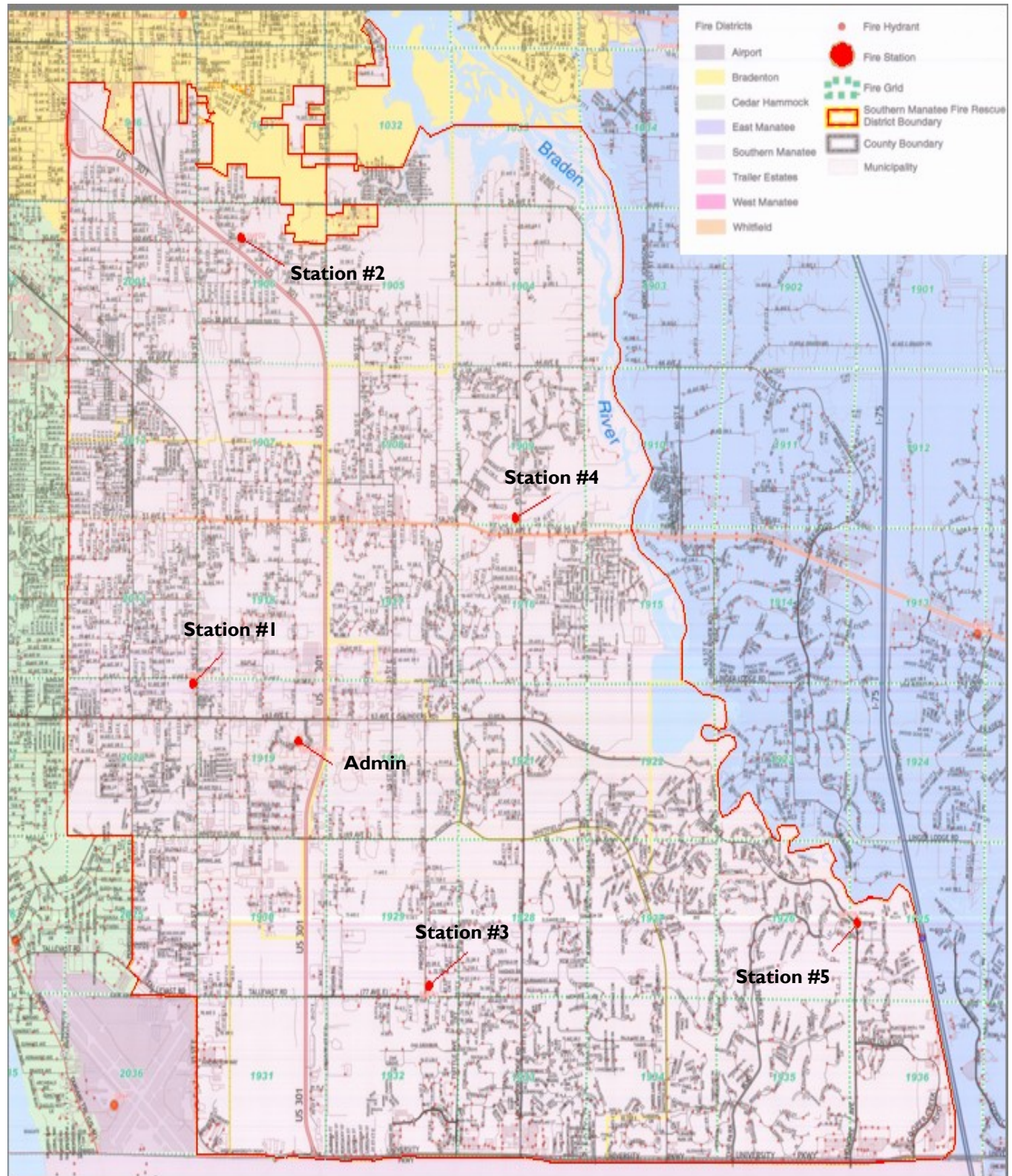
Daily activities include interaction with the following agencies:

- Manatee County Department of Public Safety
- Manatee County Sheriff's Office
- Manatee County Building/Planning Department
- School Board of Manatee County
- Florida State Highway Patrol



Southern Manatee Fire & Rescue Administrative Complex





## Southern Manatee Fire & Rescue District

## **FIRE COMMISSIONERS**

Charles Durant

Daniel Center

Melanie Marken

James Cena

Anthony Evans

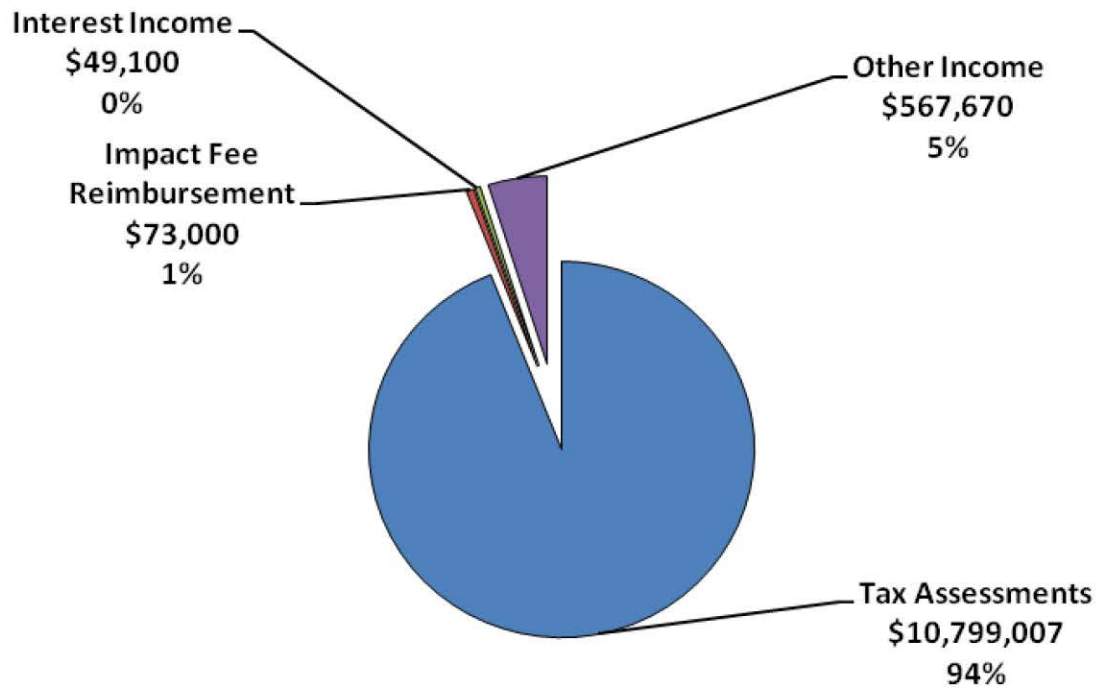
The Administration Division is directed by a Board of Fire Commissioners who are elected by the District's community. The Administration Division consists of the Fire Chief, Administrative Assistant and Bookkeeper. The operations include overseeing various administrative support services:

- Daily business operations
- Management of personnel policy and procedure
- Develop and maintaining the District's financial operating plan
- Building and ground maintenance
- Purchase and distribution of supplies
- Maintenance and repair of equipment

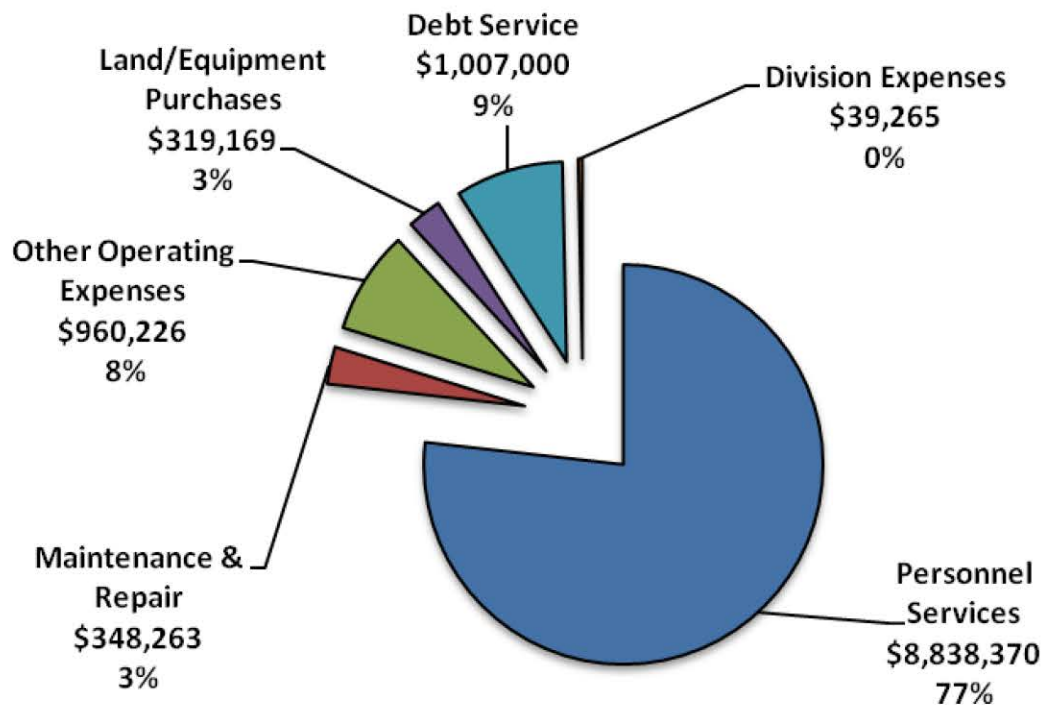
The District has been ever changing with the rapid growth of Southwest Florida. The District is committed to provide the best fire protection available and to raise the awareness of fire prevention education within our community. We have established a process of positive interaction of all employees, working together to meet the needs and objectives of the District.



## Budget Analysis Revenue for 2011/2012



## Expenditures for 2011/2012



## OPERATIONS DIVISION

The Operations Division is the backbone of our fire department's emergency response. It is tasked with protecting roughly 34 square miles of residential, commercial, and industrial properties with a seasonal population of approximately 65,000 residents. In 2012 our crews responded to 4,578 incidents and, on average, arrived on scene within 5 minutes of being dispatched.

The Operations Division has a total of 77 personnel comprised of a Deputy Chief, 3 Battalion Chiefs, a Captain (Training Officer), 15 Lieutenants, and 51 Firefighters, 5 Part Time Firefighters and a Maintenance Officer. These personnel operate from five fire stations and an Administrative building, which ensures 24 hour a day staffing of 4 fire engines, 2 aerial trucks, an operations vehicle and a command vehicle. This Division's foremost responsibility is responding to and mitigating emergencies such as, but not limited to:

Commercial Building Fires	Off Airport Aircraft Emergencies
Multi-Residential Building Fires	Hazardous Materials Incidents
Medical Emergencies	Vehicle Fires
Vehicle Accidents with Injuries	Electrical Hazards
Vehicle Accidents with Entrapment	Building Collapse
Brush Fires	Natural Disasters
Natural & Propane Gas Emergencies	Terrorism Incidents
Water Rescues	Mutual Aid Responses
Technical Rescues	Industrial Accidents

Along with daily emergency responses, the Operations Division personnel completed the following shift activities in 2012:

• Hydrants (Flow Tested / Painted / Marked)	2,234
• Tactical Building / Complex Surveys	74
• Fire Inspections	1,418
• Smoke Detector Installations	172
• Public Education Programs	55

In addition, the Operations Division personnel coordinate, manage and participate in the following committees and areas of responsibility:

The fire service is a highly regulated industry. While the project managers are responsible for their areas of responsibility, all of our personnel work together to ensure that the objectives of the project managers are completed. By utilizing our on-duty staff in this way, we are able to ensure our equipment is ready and safe to use, while simultaneously maintaining a high level of accountability and reducing cost to the District. In fact, last year, SMFR's on duty firefighting crews documented over 4,500 personnel hours.

### **Assigned Projects:**

Maintenance & repair of:

- 6 - First Out Fire Apparatus
- 2 - Reserve Fire Engines
- 13 - Command, Inspector and Staff vehicles
- 3 - Trailers
- 5 - Fire Stations -Buildings and Grounds
- 1 - Administration -Building and Grounds

Breathing Equipment  
 Cascade  
 Thermal Imaging Cameras  
 Hydraulic Rescue Equipment  
 Pneumatic Rescue Equipment  
 Medical Equipment  
 Detection Equipment  
 Hoses  
 Nozzles  
 Powered Saws  
 Gated intakes  
 Ladder Testing

Shift Training Officers  
 Fire Fighting Safety Gear  
 Gas Kits  
 Fuel Logs  
 Tactical Drawings Structure  
 Truck Checks  
 Website  
 Mapping Updates/Mapbook Updates  
 Accountability System/Inventory Control  
 Sara Title III  
 Incident Reporting Software  
 Incident reporting



Hydrant Flow Testing	Report Review
Rope Rescue	Statistics
Confined Space	Uploading to State Data Base
Water Rescue	ISO Ratings
Fitness Coordinators Program	Critical Incident Stress Management
Positive Pressure Fans	Safety Review Committee
Radios	County Ops Committee
Pagers- Inforad program	Fire Science Advisory Board
Station Alerting Systems	County Response Guideline
Extinguishers	County Training Officer's Committee
Annual Pump Testing	Uniforms
Aerial Ladder Certifications	Equipment Book

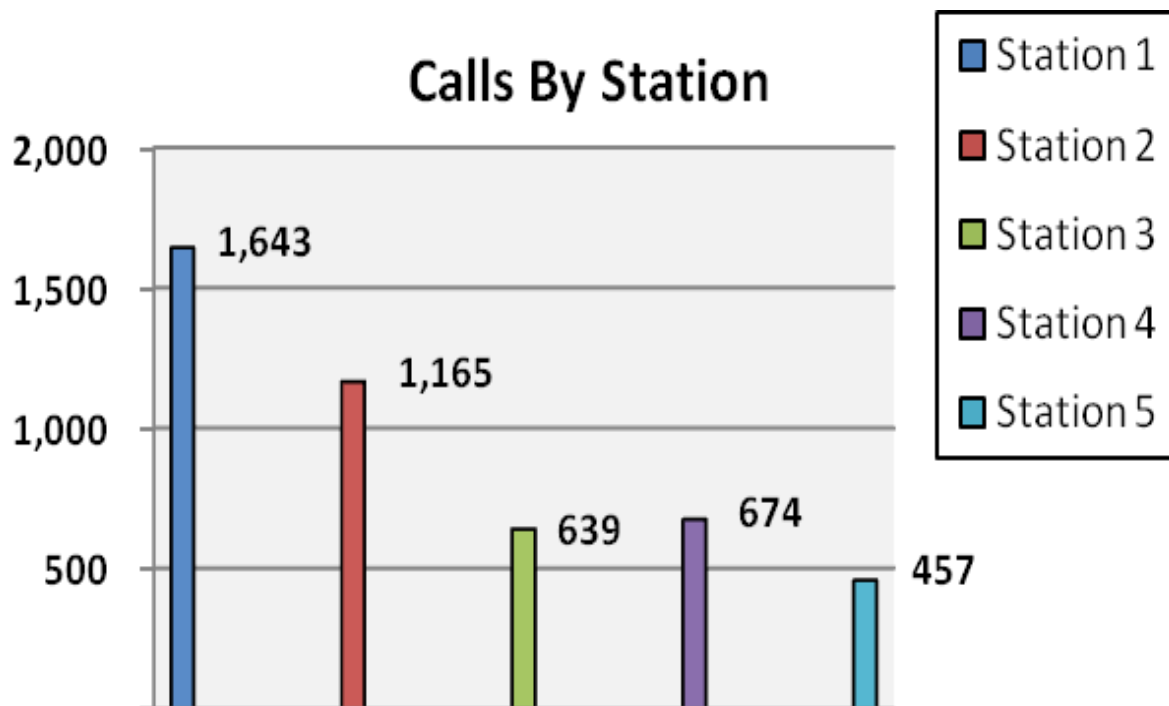
We are committed to providing prompt and effective service to our citizens by better utilizing available resources. SMFR enhances its service to the public through a series of agreements which allows our organization to cooperate with local and state agencies to provide and receive additional personnel and resources during disasters and times of need. SMFR cooperates with our neighboring fire departments to provide for a closest unit response to your fire emergency through “Mutual Aid” responses. We have agreements in place which provide for “Move-Ups” from nearby fire departments to help cover our District during times of exceptionally high call volume so you as a resident are never left unprotected. We also work with neighboring fire departments to train and staff special operations teams such as the:

Manatee County Hazardous Materials Team  
Region 6 Technical Light Rescue Team 644

We also work in conjunction with Manatee County EMS by responding to emergency medical calls within our District. We provide Basic Life Support Services to the citizens of our District as well as support assistance to Manatee County Paramedics. The majority of our full time firefighters are State certified Emergency Medical Technicians, including several certified Paramedics. Often our firefighters are the first responders on the scene of a medical emergency and the first to initiate life saving care.

As you can see, our personnel are busy with demanding jobs. Firefighters today are faced with situations that require various levels of expertise and management capabilities. They are trained in fire science, building construction, hazardous materials, medical emergencies, hydraulics, electrical hazards, fire protection systems and alarm systems. In the wake of September 11, 2001, Homeland Security now requires that we provide training in terrorism and weapons of mass destruction. Our firefighters are, have been, and always will be, your first line of defense during emergencies and natural disasters.

While our on duty crews participate in many maintenance activities, our Maintenance Officer is the unsung hero of the Operations Division. He is tasked with providing day to day logistical support to the stations and crews. He is skilled in plumbing, electrical, HVAC and appliance repair. Having a strong construction background, he coordinates our larger building and grounds repairs, including projects that require prolonged interaction with vendors and contractors such as warranty repairs, structural maintenance, roof repairs, A/C change-outs, parking lot resurfacing, and mold mitigation.



# SOUTHERN MANATEE FIRE & RESCUE DISTRICT

## OPERATIONS DIVISION

### Activities Report 2012

#### EMERGENCY INCIDENT RESPONSES

2012 Totals

<u>Type of Call</u>		
<b>100 Series - Fire</b>		<b>234</b>
* <b>Structure Fire</b>	87	
* <b>Vehicle Fire</b>	37	
* <b>Brush Fire</b>	20	
* <b>Other Fire</b>	90	
<b>200 Series - Explosion</b>		<b>2</b>
<b>300 Series - Rescue &amp; EMS</b>		<b>3,116</b>
* <b>EMS</b>	2,544	
* <b>Rescue</b>	572	
<b>400 Series - Hazardous Conditions (No fire)</b>		<b>159</b>
<b>500 Series - Service Call</b>		<b>76</b>
<b>600 Series - Good Intent Calls</b>		<b>468</b>
<b>700 Series - False Alarm &amp; False Call</b>		<b>508</b>
<b>800 Series - Severe Weather &amp; Natural Disasters</b>		<b>8</b>
<b>900 Series - Special Type</b>		<b>7</b>
<b>TOTAL CALLS</b>		<b>4,578</b>
<b>Total Calls - 2011</b>		<b>4,305</b>
<b>Percentage Increase 2011 to 2012</b>		<b>6.3%</b>
<b>Average Responses Per Day</b>		<b>12.5</b>
<b>Value of Property &amp; Contents Saved</b>	\$	<b>21,787,985</b>
<b>Fire Loss - 2012</b>	\$	<b>799,085</b>
<b>Fire Loss - 2011</b>	\$	<b>1,214,801</b>
<b>Percentage Decrease 2011 to 2012</b>		<b>-30.9%</b>

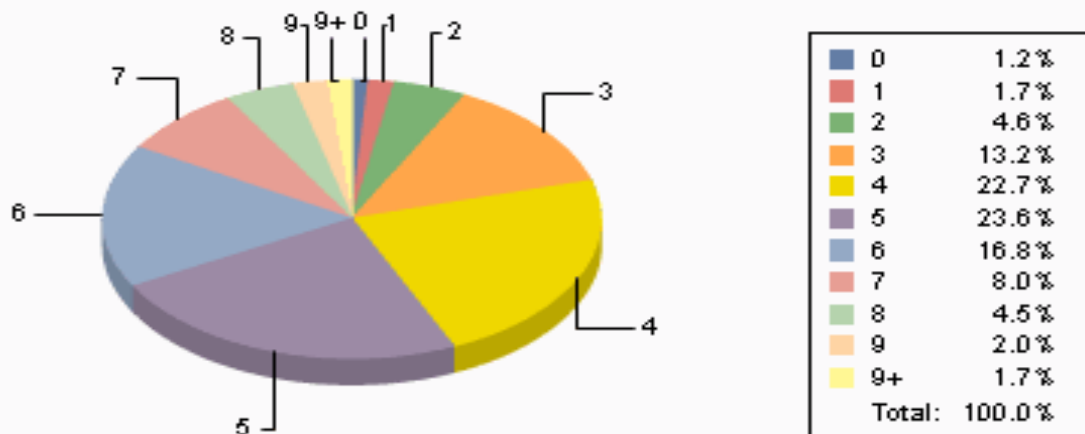
\*Mutual & Automatic Aid Received: 80 calls

\*Mutual & Automatic Aid Given: 61 calls



## YEARLY CALLS BY MONTH AND STATION - 2012

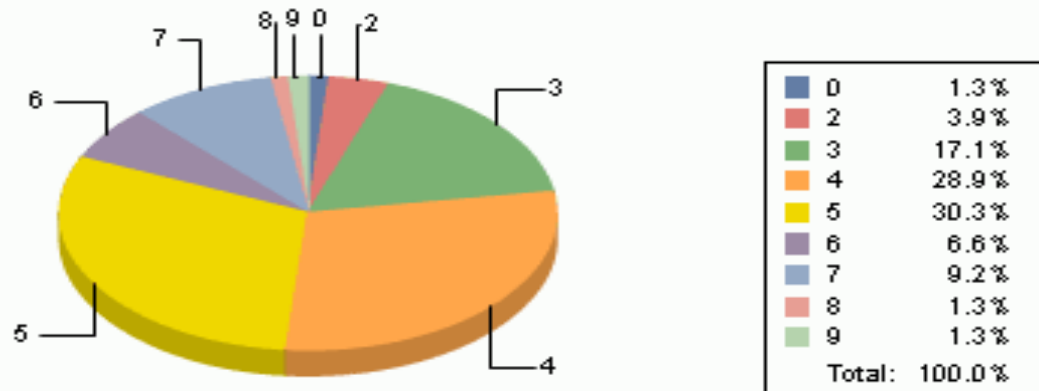
	Station 1	Station 2	Station 3	Station 4	Station 5	Monthly	YTD Total
January	134	100	63	56	48	401	401
February	123	86	54	61	32	356	757
March	155	100	62	52	47	416	1,173
April	135	93	49	50	33	360	1,533
May	113	104	37	61	43	358	1,891
June	130	97	50	53	35	365	2,256
July	135	95	49	67	30	376	2,632
August	135	101	54	49	37	376	3,008
September	118	96	59	50	30	353	3,361
October	125	84	54	47	42	352	3,713
November	178	108	54	60	47	447	4,160
December	162	101	54	68	33	418	4,578
<b>Total</b>	<b>1,643</b>	<b>1,165</b>	<b>639</b>	<b>674</b>	<b>457</b>	<b>4,578</b>	<b>Grand Total</b>

All Calls**Response Times (In Minutes)**

Overall Average time 4 minutes 52 seconds

### Average Response time to Structure Fires — 4 minutes 32 seconds

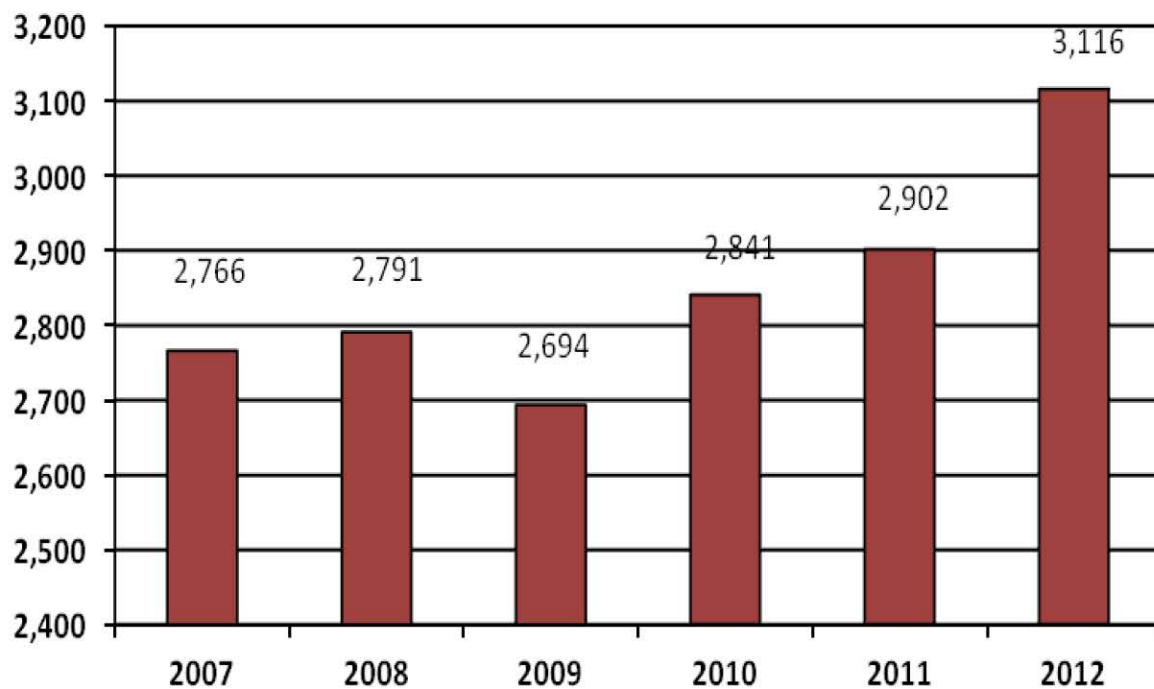
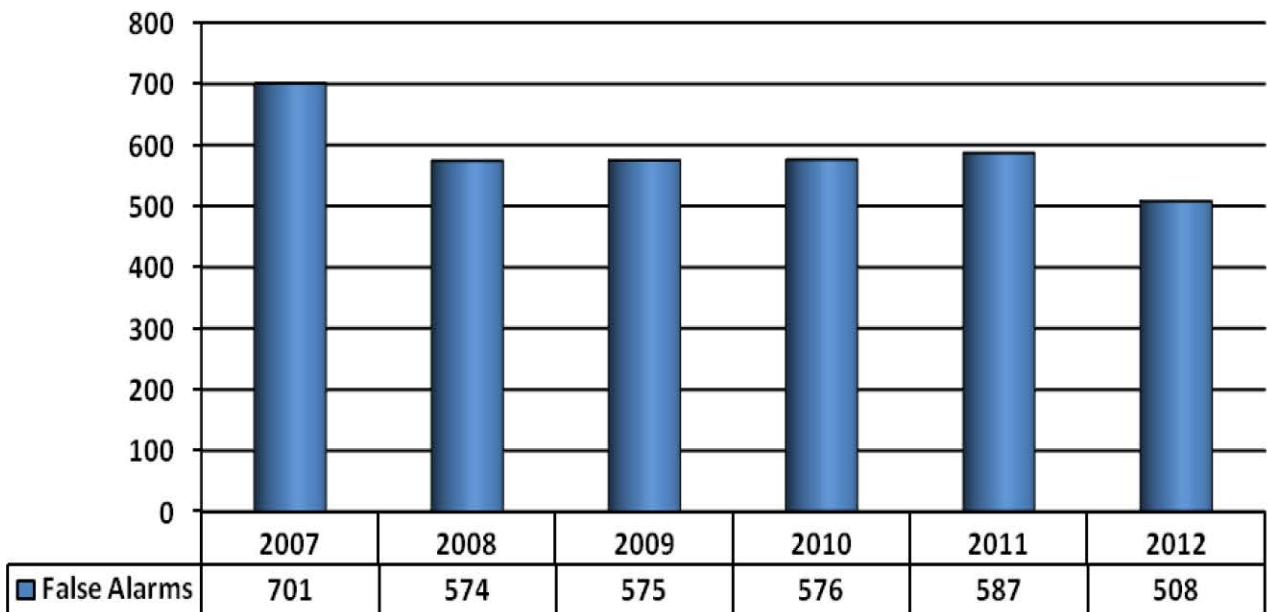
#### Response Times (In Minutes)



#### Comparison of Call Load by Month and Year

	2007	2008	2009	2010	2011	2012	Total	Month Avg	Avg Rank
January	367	387	379	367	385	401	2,286	381	2
February	358	343	323	330	355	356	2,065	344	11
March	402	453	416	339	401	416	2,427	405	1
April	401	398	363	386	320	360	2,228	371	3
May	393	359	337	359	394	358	2,200	367	5
June	334	328	364	360	339	365	2,090	348	9
July	429	324	336	352	354	376	2,171	362	8
August	372	355	339	357	382	376	2,181	364	6
September	340	308	314	326	347	353	1,988	331	12
October	315	384	333	355	337	352	2,076	346	10
November	351	345	349	358	323	447	2,173	362	7
December	356	351	325	403	368	418	2,221	370	4
							<u>6 Yr Total</u>	<u>Mo Avg</u>	
<b>Total</b>	4,418	4,335	4,178	4,292	4,305	4,578	26,106	363	
							<u>6 Yr Avg</u>	4,351	

## 6 Year Trend in False Alarms/Calls



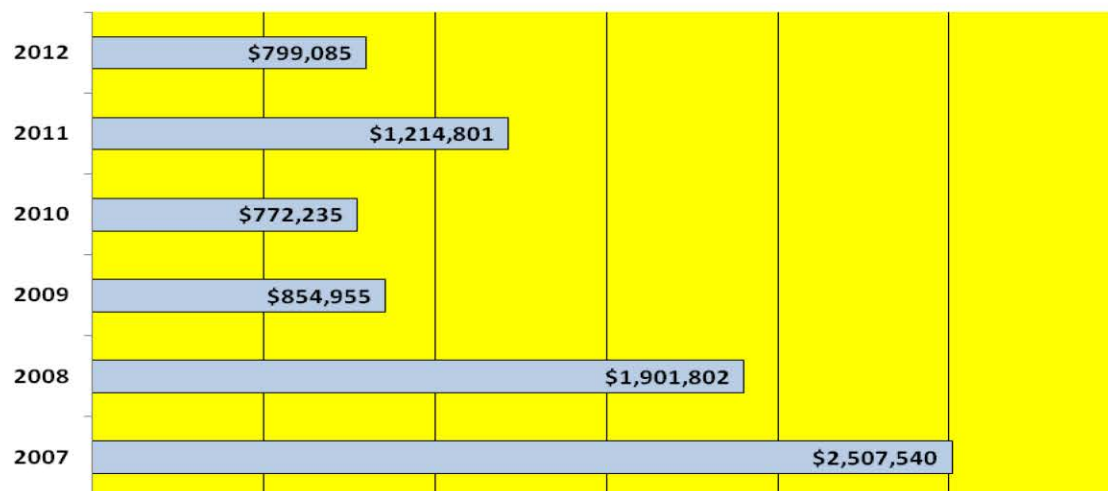
## 6 Year Trend in EMS / Rescue Calls



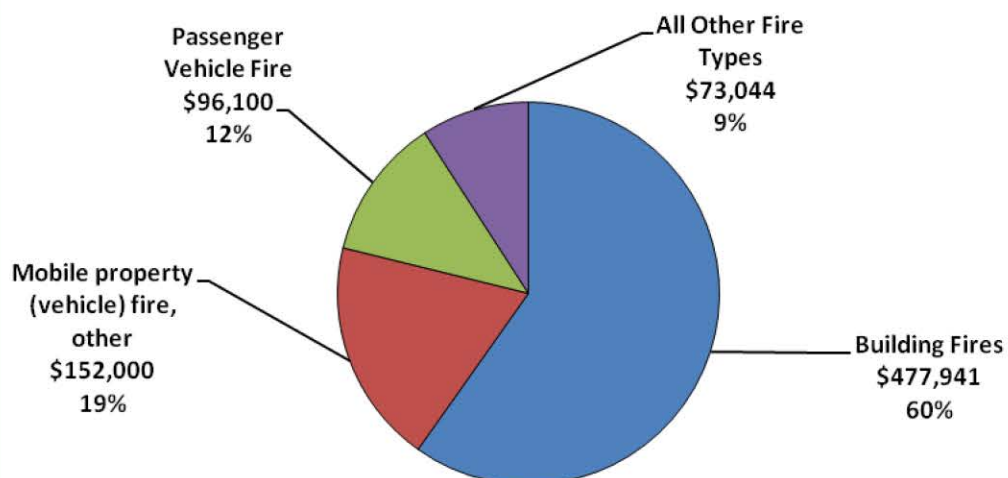
### 6 Year Trend in of Property & Contents Saved



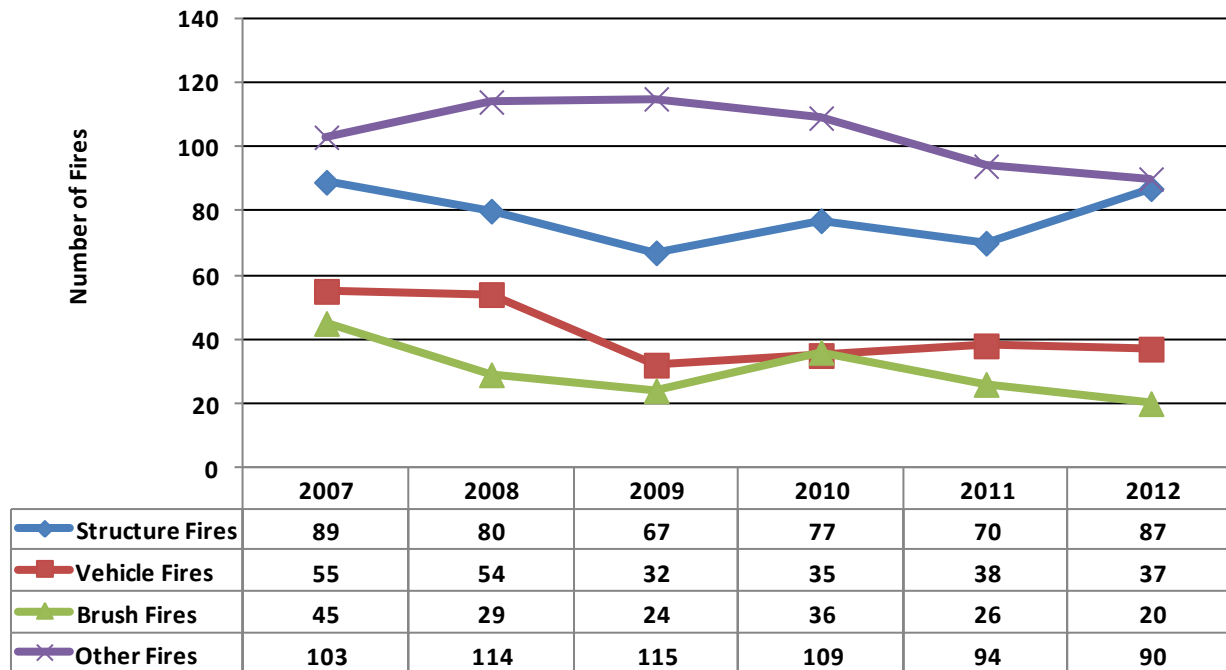
### 6 Year Trend in Fire Losses



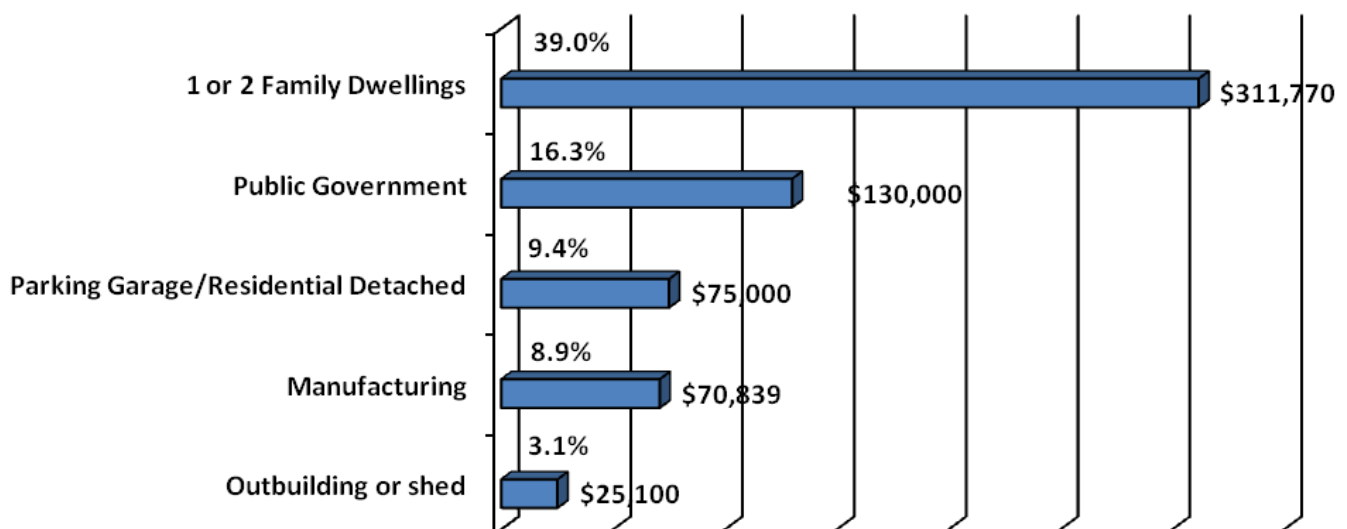
### 2012 Fire Loss By Type of Call



### 6 Year Trend in Fire Types



### Total Fire Loss by Fixed Property Use Dollar Amount & Percentage of 2012



## PREVENTION DIVISION

### PROGRAMS/ACTIVITIES

The Bureau of Fire Prevention, Inspection and Investigation is the regulatory and code enforcement division within the Southern Manatee Fire and Rescue District. The current Bureau consists of a Fire Marshal, Deputy Fire Marshal, three Fire Inspectors, one Part Time Juvenile Firesetter Coordinator, a Prevention Secretary and an Administrative Secretary. The Bureau has a very broad base of responsibilities within the District, which include:

- Public Fire Safety Education
- Juvenile Firesetters Intervention Program
- Fire and Life Safety Inspections / Code Enforcement
- Fire Prevention Management
- Plans Review
- Hazardous Materials Compliance Regulations
- Fire Investigations
- Smoke Alarm Program

The above are just a few examples of the Bureau's responsibilities and programs.



### Public Education:

Our goal is to promote public education to achieve fire prevention.

Events	72
Participants	8,838
Tee-Shirt Program	1,230

## PREVENTION DIVISION (Continued)

**Fire Codes:** The Bureau is charged with applying, maintaining and enforcing all adopted fire codes within the District. Routine fire safety inspections are conducted twice a year throughout the District with the assistance of our operations personnel. One of the fire safety inspections is completed through our “mail out” program. This inspection is completed on a sur-



vey form which is filled out by the business and returned to the Bureau.

**Plans Review:** Construction plans for commercial and residential buildings are reviewed, approved and inspected during construction by the Bureau. Besides paper, plans may now be reviewed through Buzz Saw, a digital program sent to the Bureau from the County. This paperless system provides the

opportunity to speed up plans review and comments.

**Fire Investigations:** The Bureau investigates all fires where the cause cannot be readily determined. The District works closely with the State Fire Marshal and the Manatee County Sheriff's Office. Our prevention personnel are **State Certified Fire Investigators and Nationally Certified Fire and Explosion Investigators**, and their expertise is utilized in the prosecution of arson fires and other fire related crimes.



**Safety Inspections:** In an effort to streamline the Fire Prevention Division and increase customer service, the Bureau has begun using an interactive program with laptops to conduct annual inspections while on scene. This method will allow for the reduction of paper, increased efficiency as well as long term costs savings.

Total number of 2012 inspections = 3,194

## PREVENTION DIVISION (Continued)

Implementation of new programs is a major part of the Fire Prevention Bureau operation. New programs are implemented and designed based on the needs of the community. The following are examples of such programs:

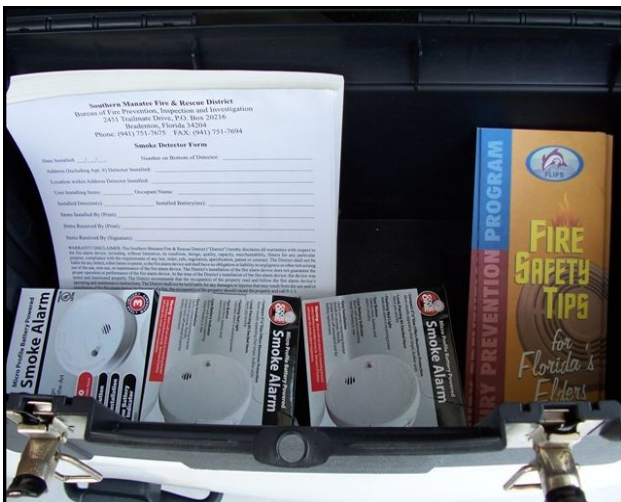
- Fire Extinguisher Training
- Fire Drill Planning
- Fire Safety in the Workplace
- Fire Safety in the Home



We have purchased a state-of-the-art Fire Safety House. The Fire Safety House is a hands-on learning tool that prepares the community for the unexpected experiences of a fire. The Fire Safety House is designed to teach fire safety to all age groups. Since its inception in January 1, 2003 approximately 19,348 persons have received fire safety training through the Safety House.

One of the primary goals in the Southern Manatee Fire & Rescue is to ensure there is a working smoke alarm inside every residential dwelling in the District. In 2003, we began an aggressive smoke alarm installation program. This program involved District personnel going “door to door” and inspecting, installing and testing smoke alarms. To

date, 7,160 smoke alarms have been installed. Through donations from the community, smoke alarms are purchased at a reduced cost from local distributors. The alarms are installed at no cost to the occupants of the dwelling.





## PREVENTION DIVISION (Continued)

To better serve the industrial community, we offer an array of free programs to train their employees on fire safety. Our fire extinguisher class provides training to employees in the types and operation of various fire extinguishers. We teach the group about fire extinguishers in a classroom setting and then proceed outside to the “live fire” training. This hands on class allows the students to feel the heat of a controlled fire and demonstrates how to extinguish fires properly.

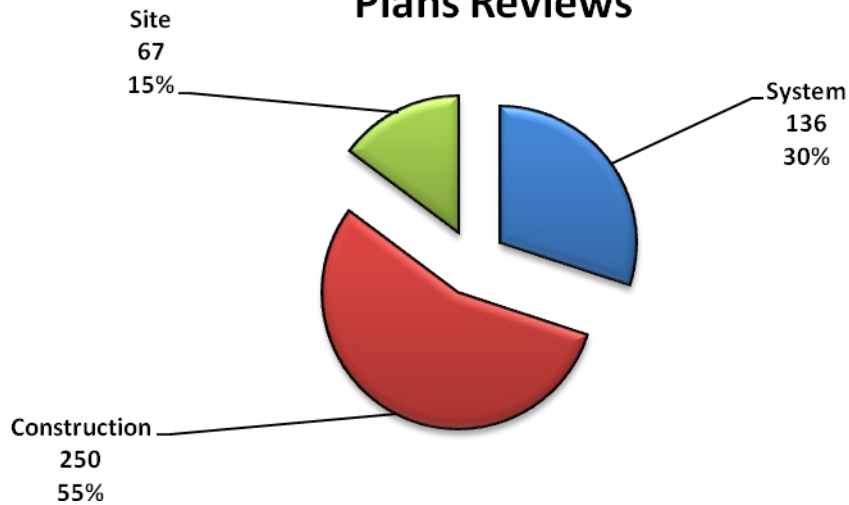


At Southern Manatee Fire and Rescue, we strive to bring fire safety to our community every day. We reach out to young and old alike, in an attempt to save lives and protect property. We are enhancing current programs and creating new ones to meet the needs of our ever growing community. At Southern Manatee Fire and Rescue we truly believe in “Prevention through Education”.

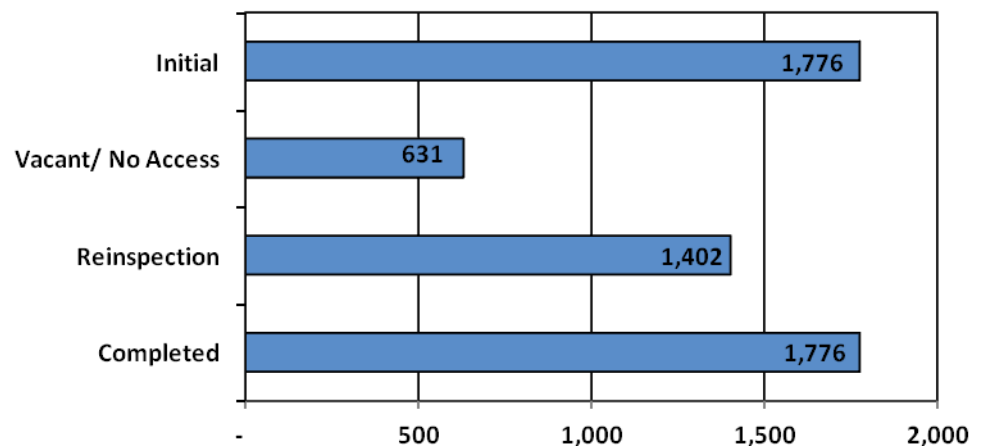
**Property taxes:** Members of the Fire Prevention Bureau assist with Ad Valorem and Non Ad Valorem taxing issues. We are in the process of conducting a District-wide audit to identify properties to ensure that they are listed with the Property Appraisers Office under the correct Department of Revenue Code(s). When properties are listed incorrectly or not listed at all, an employee of the Prevention Bureau works directly with the county government officials. All properties are measured, photographed and researched.

## 2012 Fire Prevention Statistics

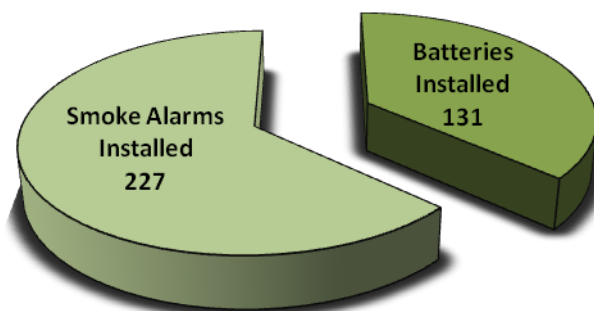
### Plans Reviews



### Inspections



### Smoke Detector Program



The 2012 Manatee County Juvenile Firesetters Program saw a reduction in the number of referrals into the program. The lower numbers reflect the effectiveness of the program.

### 2012 JUVENILE FIRESETTERS STATS

Month	Blue	Red	Purple	Green	Cyan
Jan	1	1	1	0	0
Feb	0	0	0	0	0
March	5	3	3	2	2
April	4	4	4	0	0
May	0	0	0	0	0
June	3	3	3	0	0
July	2	2	2	0	0
Aug	0	0	0	0	0
Sept	4	3	2	2	0
Oct	0	0	0	0	0
Nov	0	0	0	0	0
Dec	0	0	0	0	0
Total	19	16	15	2	2

[illegible]

## **Local and National Fire Trends 2011 Reported by the National Fire Protection Association:**

- 1,389,500 fires were responded to by public fire departments in 2011. This is a 4.4% increase from the year before.
- In 2011, there were 3,005 civilian fire deaths reported in the United States. This is a 3.7% decrease from 2010. One civilian death occurred every two hours fifty five minutes.
- 2,520 civilian fire deaths occurred in the home which equals 84% of all fire deaths. This number is a 4.5% decrease from 2010. Nationwide, there is a civilian fire death every 175 minutes and a civilian death in a home fire every 208 minutes.
- 13,910 of all civilian injuries occurred in home fires.
- An estimated \$11.7 billion dollars of property damage occurred as a result of fire. This is a slight 0.6% increase from 2010.
- \$6.9 billion of property loss occurred in home fires.
- Nationwide, there was a civilian fire injury every 30 minutes and a civilian fire injury in home fires every 38 minutes.
- 484,500 structure fires occurred in the United States in 2011.
- \$9.7 billion of property damage occurred in structure fires.
- One structure fire is reported every 65 seconds and in particular a home fire every 85 seconds.
- There was an estimated 26,500 intentionally set fire which is a decrease of 3.6% in 2011. Of those intentionally set fires, 190 civilian deaths occurred. This is a 5.0% decrease from 2010.
- Intentionally set structure fires resulted in \$601,000,000 dollars in property damage.
- A fire department responds to a fire every 23 seconds.
- 686,000 outside and other fires occurred in the United States during 2011. This is an 8% increase from 2010.
- There were 675 civilian injuries and 65 deaths from outside fires in 2010.
- One outside fire is reported every 46 seconds.
- 219,000 vehicle fires were reported in 2011. This is a 2% increase from 2010.
- There were 1,190 civilian fire injuries and 300 civilian fire deaths from vehicle fires in 2011.
- 14,000 intentionally set vehicle fires occurred, no change from last year, which caused \$88,000,000 in property damage.
- \$1.4 billion of property loss occurred in vehicle fires.
- One vehicle fire was reported every 144 seconds in 2011.

## TRAINING DIVISION

Southern Manatee Fire & Rescue Line Personnel train six days a week, typically from 9:00 – 11:30a.m., Sunday through Friday. In addition, the officers meet on Saturdays to train and/or discuss issues pertinent to being a fire officer and associated topics related to serving the District.

### SMFR Personnel Training Data

Subjects Trained on: 75+

Total Training Hours: 26,229.85

Driver Certifications: 8

Rider Certifications: 0

Promotions: 9



In 2012 one College Degree was  
Earned As a Result of Training/Classes.

### 7 State Certifications Acquired by Personnel in 2012:

2 Fire Officer I Certifications

2 Fire Safety Inspector I

1 Fire Safety Inspector II

1 Fire Officer II

1 Fire Investigator I



All Line Personnel were cycled through a rope rescue rappelling class.

The crews also completed the Annual Hydraulics Exam.



## TRAINING (Continued)

Personnel were run through the agility assessment at SMFR old station 3 (training building). All line personnel complete this assessment annually.

The crews ran through the annual hose maze assessment, navigating 600 feet of hose with their company in the smoked out station/bays at the old station 3.



There were six training sessions on Rapid Intervention Crews, Calling the Mayday, and Evacuation. All line personnel completed a practical recertification process on apparatus, both engines and aerials.



Facility tours for the crews included the new Manatee County charter school at 4400 30th St. E, Strategic Materials, Suburban Propane, Sarasota/ Bradenton Airport (SRQ), Honeycomb Inc. and the Holiday Inn Airport.

## TRAINING DATA (Continued)



Personnel reviewed policy in preparation for the multi-agency night time high-rise drills.

Crews participated in an 8 hour hazmat refresher class and scenario.

This information and statistical data is by no means all inclusive of the training completed by the personnel of Southern

Manatee Fire & Rescue District. However, this is a general overview of many of the training sessions completed in 2012. The safety of Southern Manatee Fire & Rescue personnel is directly related to their level of training. This is a well known and proven fact, which becomes painfully clear when examining the 2011 statistics from the National Fire Protection Association.



Unfortunately, there are approximately 70,000 firefighter injuries and a 100 line-of-duty deaths each and every year.





## VOLUNTEERS

When Oneco-Tallevast and Samoset Fire Departments were chartered in 1958, they were run solely by Volunteers who would respond to the firehouses from their homes and workplaces. Over the years the needs of the community have required career positions to be added, however the Southern Manatee Volunteers remain an important part of the organization.

Applicants are required to have Firefighter II (over 600 hours of training), complete a standard agility test, and are subject to background and driver's license review. Over 90% of our full-time firefighters came up through the Volunteer ranks. The Volunteers currently supplement the staffing on our



apparatus and

are able to

make their own work schedules. They participate in the daily training and are offered additional training on Wednesday nights. There were six active Volunteers in 2012.

The Southern Manatee Volunteer Firefighters Association is a non-profit organization made up of both career and Volunteer firefighters. The

Association hosts various fund raisers during the year with the proceeds supporting training, firefighting equipment, exercise and health equipment, and other community support. In 2012 the association was involved in the Mutual Aid Softball Tournament, the annual golf tournament at University Park Country Club, and the annual chili cook-off which supports the Emergency Services Memorial Fund.



Memorial Dedicated  
September 3, 2011

The steel beams representing the World Trade Center towers are part of an actual box beam estimated to have fallen from the 32<sup>nd</sup> floor of WTC Tower 1 during the attacks of 9/11. Throughout fabrication of this memorial, the box beam was cut in half and a protruding flange on the left side was removed, then encased in the box beams along with all molten steel.

All scarring, markings and damages to the steel box beams occurred during the attacks of September 11<sup>th</sup>, 2001 or during the rigorous undertaking that followed.

A special thanks to the Port Authorities of New York and New Jersey

***“We will never forget”***



Memorial is located at the Southern Manatee Fire and Rescue administration building at 2451 Trailmate Drive, Sarasota, Florida 34243

**This annual report is a courtesy of the Southern Manatee Fire and Rescue District. We strive daily to provide the best fire protection and fire safety education to the citizens of our Community. If you have any questions or comments about this report or would like any information about the programs discussed, please do not hesitate to contact us.**

**Southern Manatee Fire and Rescue District (941) 751-7675**