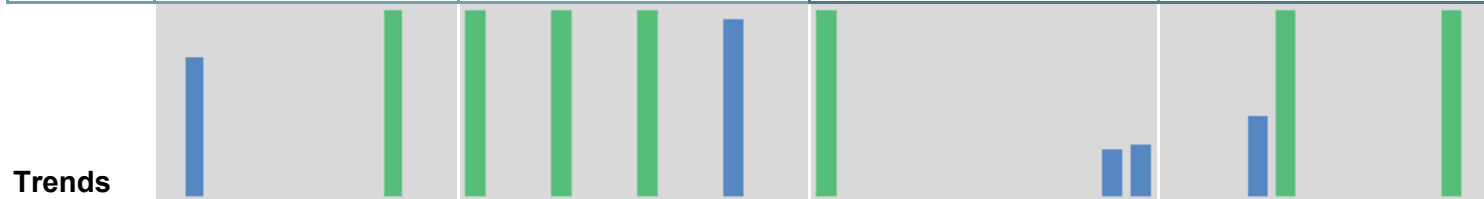
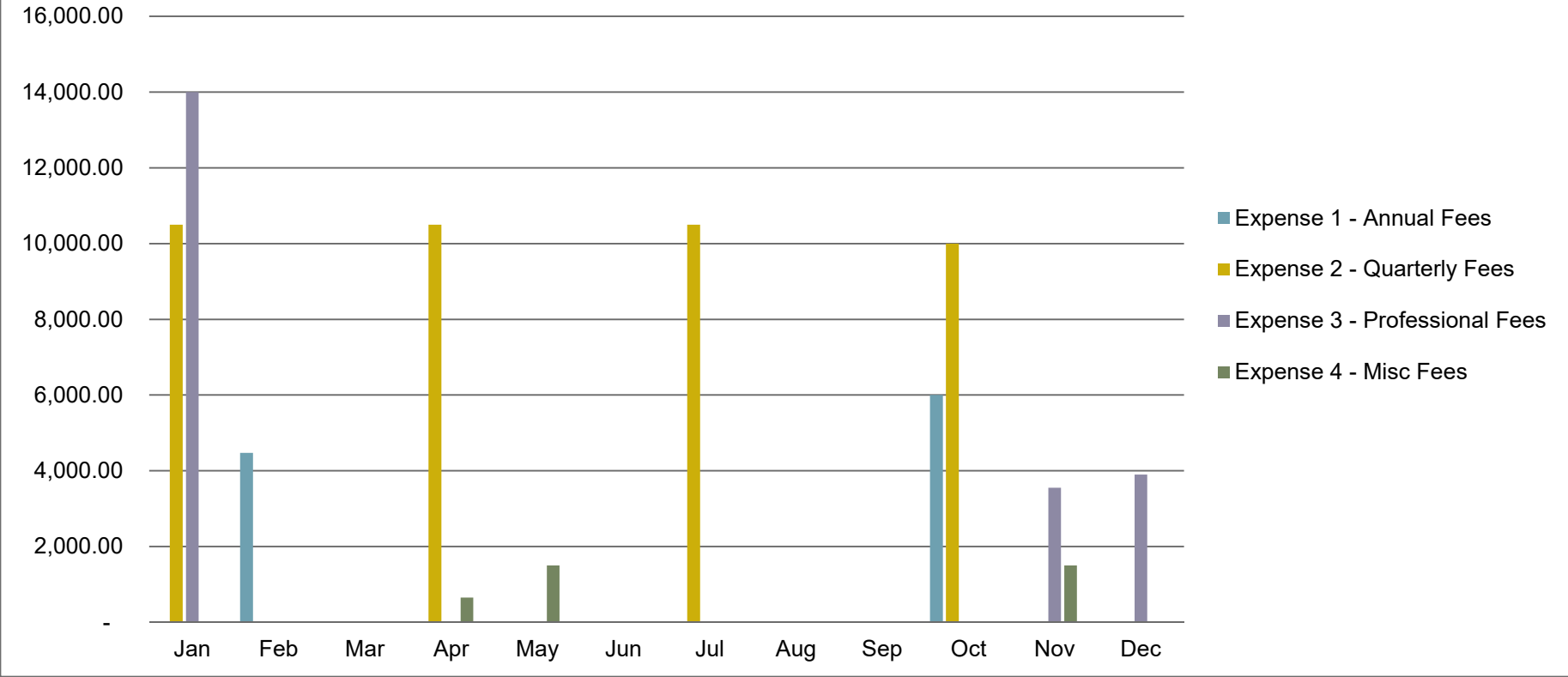


# Firefighter Pension Expenses 2018/19

Month	Expense 1 - Annual Fees	Expense 2 - Quarterly Fees	Expense 3 - Professional Fees	Expense 4 - Misc Fees	
Jan	-	10,500.00	14,000.00	-	24500.00
Feb	4,475.00	-	-	-	4475.00
Mar	-	-	-	-	0.00
Apr	-	10,500.00	-	650.00	11150.00
May	-	-	-	1,500.00	1500.00
Jun	-	-	-	-	0.00
Jul	-	10,500.00	-	-	10500.00
Aug	-	-	-	-	0.00
Sep	-	-	-	-	0.00
Oct	6,000.00	10,000.00	-	-	16000.00
Nov	-	-	3,550.00	1,500.00	5050.00
Dec	-	-	3,900.00	-	3900.00
<b>Total</b>	<b>10,475.00</b>	<b>41,500.00</b>	<b>21,450.00</b>	<b>3,650.00</b>	<b>77075.00</b>



## Expense Trends by Month



All adjustable fees are based on the following schedule  
 It's 20 bp per year on first \$5,999,999 of assets;  
 15 bp per year on asset portion \$6 million to \$14,999,999;  
 10 bp per year on asset portion \$15 million to \$24,999,999;  
 5 bp per year on asset portion from \$25 million