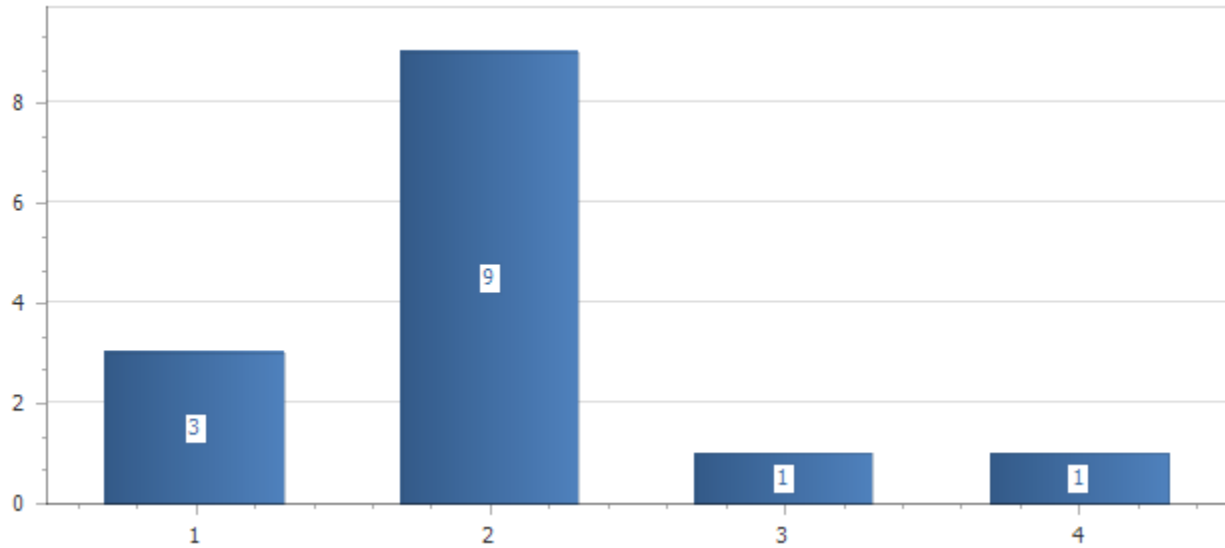




# SOUTHERN MANATEE FIRE RESCUE

2451 Trailmate Drive, PO Box 20216, Bradenton, FL 34204  
Phone: (941) 751-7675 Fax: (941) 751-7694 Web: www.smfr.com

## Overdose Incidents By Zone



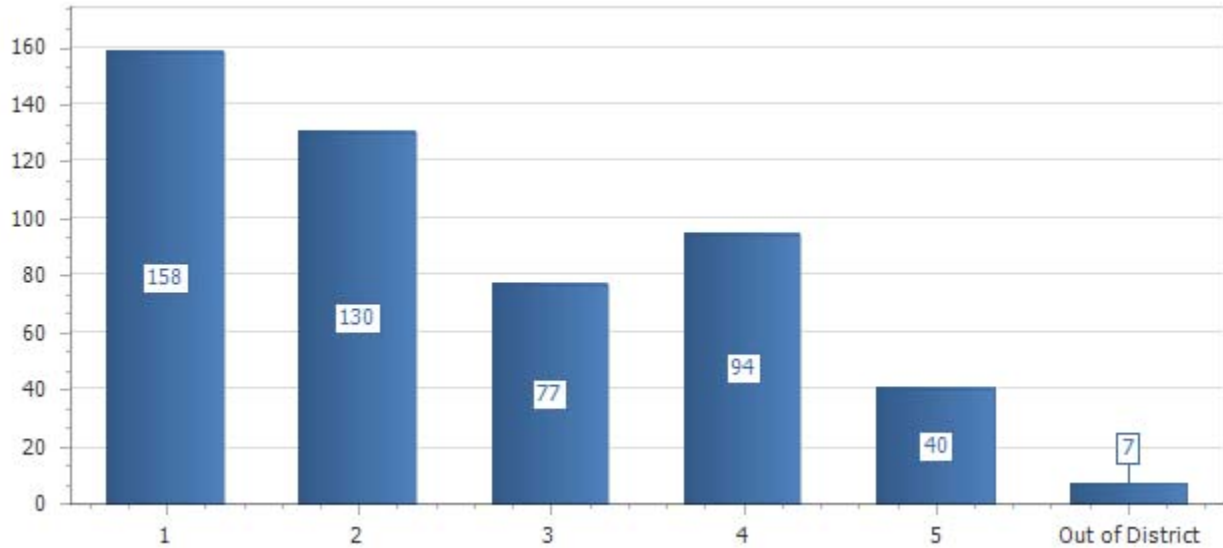
<b>Zone: 1</b>	<b>3</b>
<b>Zone: 2</b>	<b>9</b>
<b>Zone: 3</b>	<b>1</b>
<b>Zone: 4</b>	<b>1</b>
<b>Total:</b>	<b>14</b>



# SOUTHERN MANATEE FIRE RESCUE

2451 Trailmate Drive, PO Box 20216, Bradenton, FL 34204  
Phone: (941) 751-7675 Fax: (941) 751-7694 Web: www.smfr.com

## Incident Count By Zone



<b>Zone: 1</b>	<b>158</b>
<b>Zone: 2</b>	<b>130</b>
<b>Zone: 3</b>	<b>77</b>
<b>Zone: 4</b>	<b>94</b>
<b>Zone: 5</b>	<b>40</b>
<b>Zone: Out of District</b>	<b>7</b>

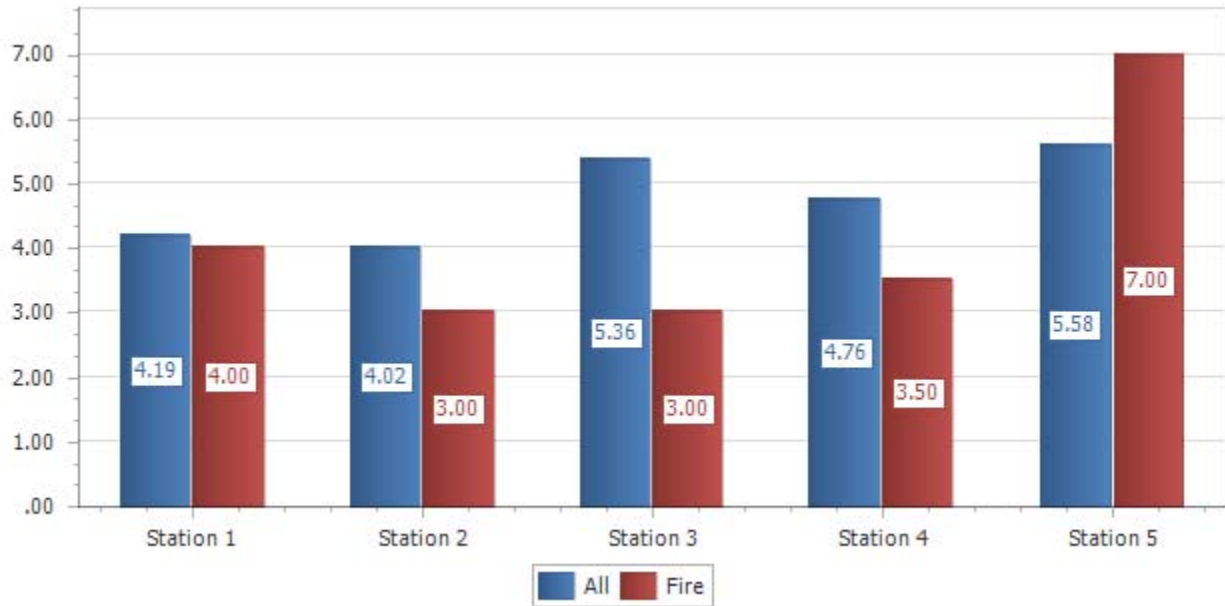
**Total: 506**



# SOUTHERN MANATEE FIRE RESCUE

2451 Trailmate Drive, PO Box 20216, Bradenton, FL 34204  
Phone: (941) 751-7675 Fax: (941) 751-7694 Web: www.smfr.com

## Incident Response Times by Station (All vs Fire)



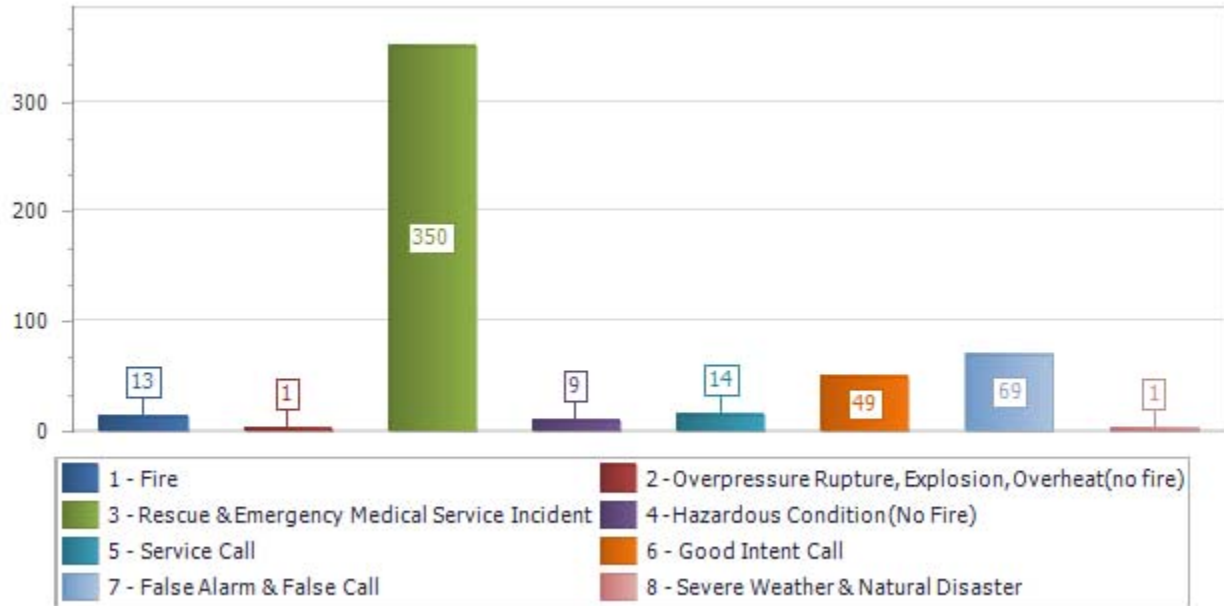
**Response Time – 4.53**



# SOUTHERN MANATEE FIRE RESCUE

2451 Trailmate Drive, PO Box 20216, Bradenton, FL 34204  
Phone: (941) 751-7675 Fax: (941) 751-7694 Web: www.smfr.com

## Incidents By Type - Major Category



<b>1 - Fire</b>	<b>13</b>
<b>2 - Overpressure Rupture, Explosion, Overheat(no fire)</b>	<b>1</b>
<b>3 - Rescue &amp; Emergency Medical Service Incident</b>	<b>350</b>
<b>4 - Hazardous Condition (No Fire)</b>	<b>9</b>
<b>5 - Service Call</b>	<b>14</b>
<b>6 - Good Intent Call</b>	<b>49</b>
<b>7 - False Alarm &amp; False Call</b>	<b>69</b>
<b>8 - Severe Weather &amp; Natural Disaster</b>	<b>1</b>

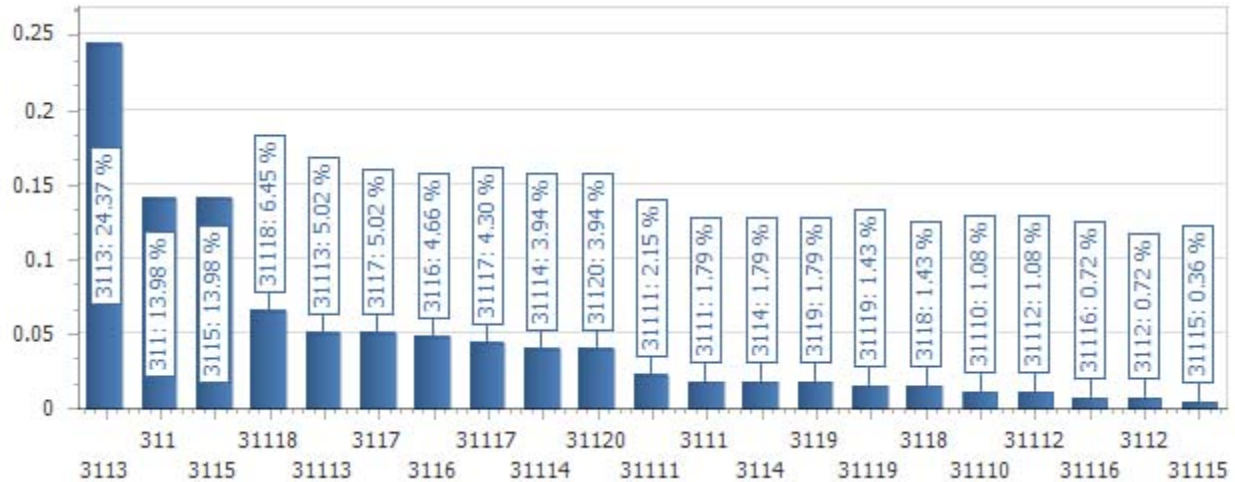
<b>Total:</b>	<b>506</b>
---------------	------------



# SOUTHERN MANATEE FIRE RESCUE

2451 Trailmate Drive, PO Box 20216, Bradenton, FL 34204  
 Phone: (941) 751-7675 Fax: (941) 751-7694 Web: www.smfr.com

## Rescue Incidents by Type



Incident Type	Total Incidents	Percent
311 - Medical assist, assist EMS crew	39	13.98%
3111 - Allergic Reaction	5	1.79%
31110 - Lift Assist to EMS (Use 554 for FD only lift assist)	3	1.08%
31111 - Person Down	6	2.15%
31112 - OB Related	3	1.08%
31113 - Overdose	14	5.02%
31114 - Seizure	11	3.94%
31115 - Shooting	1	0.36%
31116 - Stabbing	2	0.72%
31117 - Stroke	12	4.30%
31118 - Syncope	18	6.45%
31119 - Traumatic Injury	4	1.43%
3112 - Assault	2	0.72%
31120 - Unconscious	11	3.94%
3113 - Breathing Problems	68	24.37%
3114 - Cardiac Arrest	5	1.79%
3115 - Chest Pain	39	13.98%

<b>Incident Type</b>	<b>Total Incidents</b>	<b>Percent</b>
3116 - Diabetic	13	4.66%
3117 - Fall (Use 554 for FD only lift assist)	14	5.02%
3118 - Heart Problem	4	1.43%
3119 - Hemorrhage	5	1.79%

**Total Number of Incidents: 279**

**Total Number of Incident Types: 21**

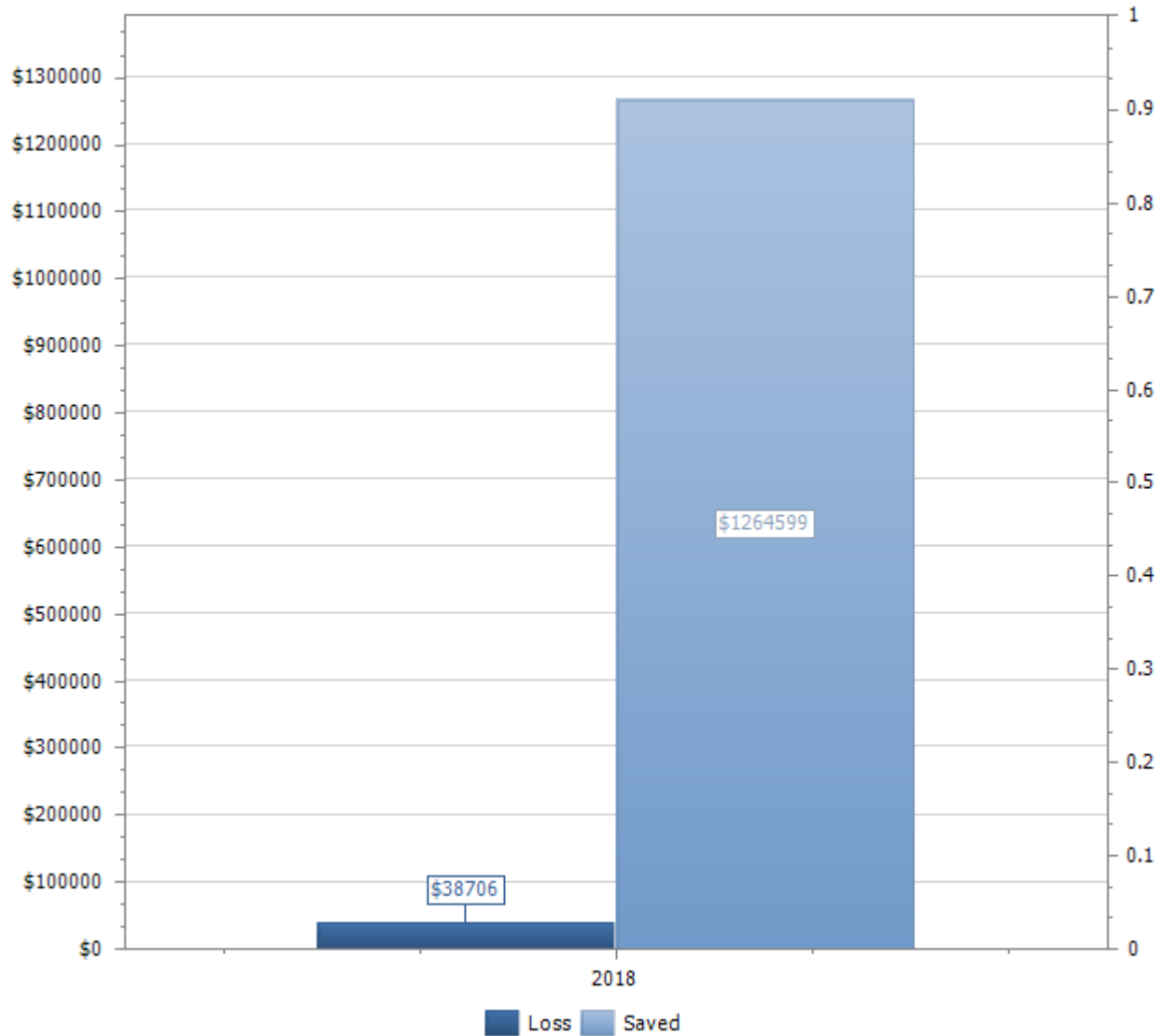


# SOUTHERN MANATEE FIRE RESCUE

2451 Trailmate Drive, PO Box 20216, Bradenton, FL 34204  
Phone: (941) 751-7675 Fax: (941) 751-7694 Web: www.smfr.com

## Incident Reports By Dollar Loss and Saved - Last Month

*"Loss" and "Saved" are calculated from the combination of Property and Contents*

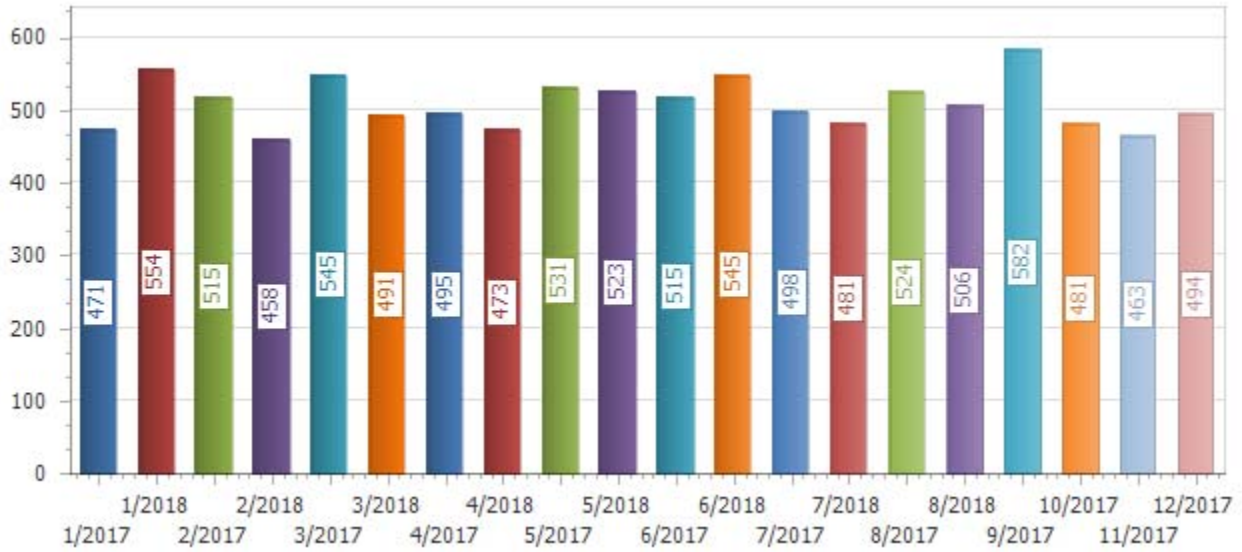




# SOUTHERN MANATEE FIRE RESCUE

2451 Trailmate Drive, PO Box 20216, Bradenton, FL 34204  
 Phone: (941) 751-7675 Fax: (941) 751-7694 Web: www.smfr.com

## Comparison of Incidents by Month, YTD



<u>Period</u>	<u>Number of Incidents</u>
1/2017	471
1/2018	554
2/2017	515
2/2018	458
3/2017	545
3/2018	491
4/2017	495
4/2018	473
5/2017	531
5/2018	523
6/2017	515
6/2018	545
7/2017	498



7/2018	481
8/2017	524
8/2018	506
9/2017	582
10/2017	481
11/2017	463
12/2017	494



## SOUTHERN MANATEE FIRE RESCUE

2451 Trailmate Drive, PO Box 20216, Bradenton, FL 34204  
Phone: (941) 751-7675 Fax: (941) 751-7694 Web: www.smfr.com

### Mutual Aid by Agency and Type, Summary

#### Cedar Hammock Fire Rescue

2 - Automatic aid received	2
4 - Automatic aid given	2

#### East Manatee Fire Rescue

4 - Automatic aid given	1
-------------------------	---

#### Sarasota County Fire Department

2 - Automatic aid received	1
----------------------------	---



## **SOUTHERN MANATEE FIRE RESCUE**

2451 Trailmate Drive, PO Box 20216, Bradenton, FL 34204  
Phone: (941) 751-7675 Fax: (941) 751-7694 Web: www.smfr.com

### **Apparatus Responses to Another Zone**

<b>Apparatus: E311</b>	<b>Out of Zone Responses: 9</b>
<b>Apparatus: E312</b>	<b>Out of Zone Responses: 7</b>
<b>Apparatus: E321</b>	<b>Out of Zone Responses: 5</b>
<b>Apparatus: E331</b>	<b>Out of Zone Responses: 2</b>
<b>Apparatus: E341</b>	<b>Out of Zone Responses: 7</b>
<b>Apparatus: E351</b>	<b>Out of Zone Responses: 9</b>
<b>Apparatus: L339</b>	<b>Out of Zone Responses: 12</b>
<b>Apparatus: SQ328</b>	<b>Out of Zone Responses: 16</b>
<b>Total Out of Zone Responses: 67</b>	



## SOUTHERN MANATEE FIRE RESCUE

2451 Trailmate Drive, PO Box 20216, Bradenton, FL 34204  
Phone: (941) 751-7675 Fax: (941) 751-7694 Web: www.smfr.com

### Incident Reports by Apparatus, Summary

<b>Apparatus:</b>	<b>Total Number of Incidents Responded to:</b>
E311	73
E312	107
E321	124
E331	6
E341	97
E351	44
L339	79
SQ328	25

**Total Number of Incidents: 506**

#NAME?	PROJECT ASSIGNMENTS		
		Updated: 1	6/15/2018
PROJECT	MANAGER	SHIFT	
Accountability tags	Ellis	A	
Audio & Video Production	Gatanis	A	
Cribbing	DeHart	A	
Directives Committee	Chevalier	A	
Drone UAS	Gatanis	A	
Equipment books	Daughtrey	A	
Extrication Air Bags	Sedgley	A	
Fitness Coordinators	Duquette	A	
Flashlights	Lear	A	
FTO-A Shift	Foss	A	
Haz Mat suit Testing	Collins	A	
Haz Mat Truck & Trailer Inventory Checks	Moonen	A	
Hose	Geiser	A	
Hose-5" Pony	Yoder	A	
Inventory	Lambert	A	
Ladders (ground ladders)	Gieser	A	
Mapbook hardware	Lambert	A	
Nozzles	Hylwa	A	
Report Review-A Shift	Moore	A	
Rope	Lambert	A	
Safety Committee	Hylwa	A	
Safety Committee	Lambert	A	
Safety gear	Burton/Moonen	A	
SARA Title III	Chevalier	A	
Website	Gatanis	A	
DeHart	Car Seats	A	
Fire Pro	Connor	A	
AEDs	Ranney	B	
Apparatus maintenance	Perry/Tumolo	B	
Apparatus Tires	Ryder	B	
Directives Committee	Velazquez	B	
Drone UAS	Tumolo/Murphy	B	
Extinguishers	Eldridge	B	
Fitness Coordinators	Reisdorf	B	
Foam	Ely	B	
FTO-B Shift	Hauck	B	
Gated Intakes	Ross	B	
Gear extractor	McKeaver	B	
Hand tools	Gibson	B	
Hose bed covers	Lucas	B	
I-mobile	Hauck	B	
Medical supplies	Pierce	B	
PS Trax	Hodges B	B	
Radios	Naples	B	
Report Review- B Shift	Hodges, B / Wernet	B	
Safety Committee	Burnett	B	
Station Self Inspection	Burnett	B	
Support Unit Trailer	Ranney	B	
Tool boxes	R. Smith	B	
Uniforms	D'Agostino	B	
Air Chisels	Ramer	C	
Blowers	Pietsch	C	
Cascade	Saxman	C	
Detection equipment	Kaliher	C	
Directives Committee	Kaliher	C	
Drone UAS	White/Davis, R	C	
Fitness Coordinators	Hollins	C	
Flow gauges	Ramer	C	
FTO-C Shift	Anderson	C	
Alerting systems	McGinley	C	
Gas kits	Wojcik	C	
Hydrant tags	Pratt	C	
Hydrants	Questionati	C	
Lawn Maintenance	Questionati	C	
LT450 kits	S. Hodges	C	
Maps	Bonds	C	
Pass Trackers	Sperko	C	
Report Review- C Shift	Keusch	C	
Safety Committee	S. Hodges	C	
Safety vests	Bennett	C	
SCBA masks & fit testing	White	C	
SCBA's	Morgan/McGinley	C	
SEMS II accountability	Sperko	C	
Sewing	Hollins	C	
Tacticals	Davis	C	
Thermal Imagers	Pratt	C	
Traffic Cones	Bennett III	C	
Vent saws	Sigfrid	C	
Weight equipment	Keusch	C	